



**PROCONTOURS**

Nurturing innovation & solutions

ACFT  
ZOOM 12x  
READY

Security

## DIGITAL INTEGRATION AND DATA ACQUISITION

- Identify threats and protect resources in real time with needed speed and scale.
- Unlock data so that you understand a rapidly changing and complex security environment.
- Protect personnel and assets.
- Receive actionable information to speed up your decision process.
- Know your area of responsibility.
- Mitigate threats with intelligence, surveillance and reconnaissance.

### APPLICATIONS

- Border and coastal surveillance.
- Anti-narcotics and anti-terror operations.
- Search and rescue missions.
- Perimeter surveillance.
- Emergency response.
- Operational security.

**Today's security environment is complex and volatile.**

Our Tactical Unmanned Aerial Sensor services create an environment that unlocks, identifies, and synthesizes the most valuable data, targeting exactly what is important to your operation.

## TECHNOLOGY

## Security



Persistent surveillance with radar applications to locate activity under vegetation or cloud cover.



Change detection analysis to identify variations within areas and activities over time and space.



Perimeter and border monitoring for areas of interest, search and rescue, and emergency response.



Multi sensors for day and night operations with thermal, infrared and other optics.



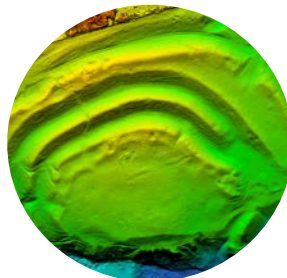
Activity surveillance and real-time activity feed.



Sea and land tracking with high endurance and beyond-visual-line-of-sight platforms and communication systems.



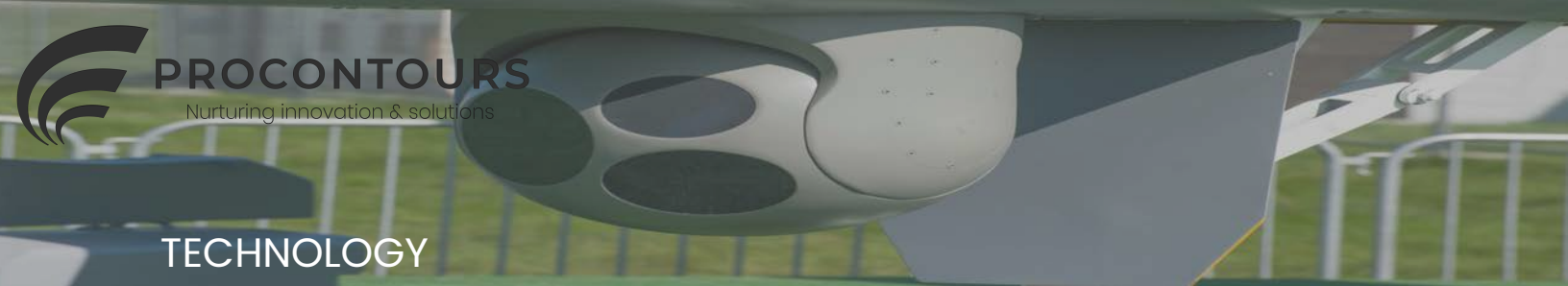
Real time information and support for emergency situations, natural disasters, and urban activity.



Geo referenced reproduction with orthomosaic maps, 3D point clouds, digital terrain models, and 3D textured mesh imagery.



Mobil and tactical for fast deployment and sustainment of operations.



## TECHNOLOGY



### Beyond Visual Line of Sight (BVLOS) Capabilities.

- Fly farther and faster with 12+ hours of endurance.
- Vertical Take Off and Landing — fly from anywhere.

### Scale your approach.

- System integration to match your needs.
- By remaining neutral, we you save time and money.
- One size does not fit all.

### FAA Certified Pilots with worldwide experience.

- Mission planners.
- GIS professionals.
- Sensor Operators.
- Pilots

### Systems we commonly use for our operations.

Sensors	RGB (Visible)	Red Edge	Thermal / Infrared		
			NIR	MWIR	LWIR
BAND	450 - 740 nm	680 - 750 nm	.74 - 1 $\mu$ m	3 - 5 $\mu$ m	8 - 14 $\mu$ m
AVT CM100 Gimbal	✓				✓
Trillium HD25-LV Gimbal	✓				✓
Sony RX1RII	✓		✓		
MicaSense RedEdge - MX Multispectral	✓	✓	✓		
MicaSense Altum-Multispectral + Thermal	✓	✓	✓		✓
Niatros SD MWIR, OEM, OGI	✓			✓	
Headwall Nanospec Hyperspectral	✓	✓	✓		
Flir Duo Pro R	✓	✓	✓		✓
Synthetic Aperture Radar (SAR)					